








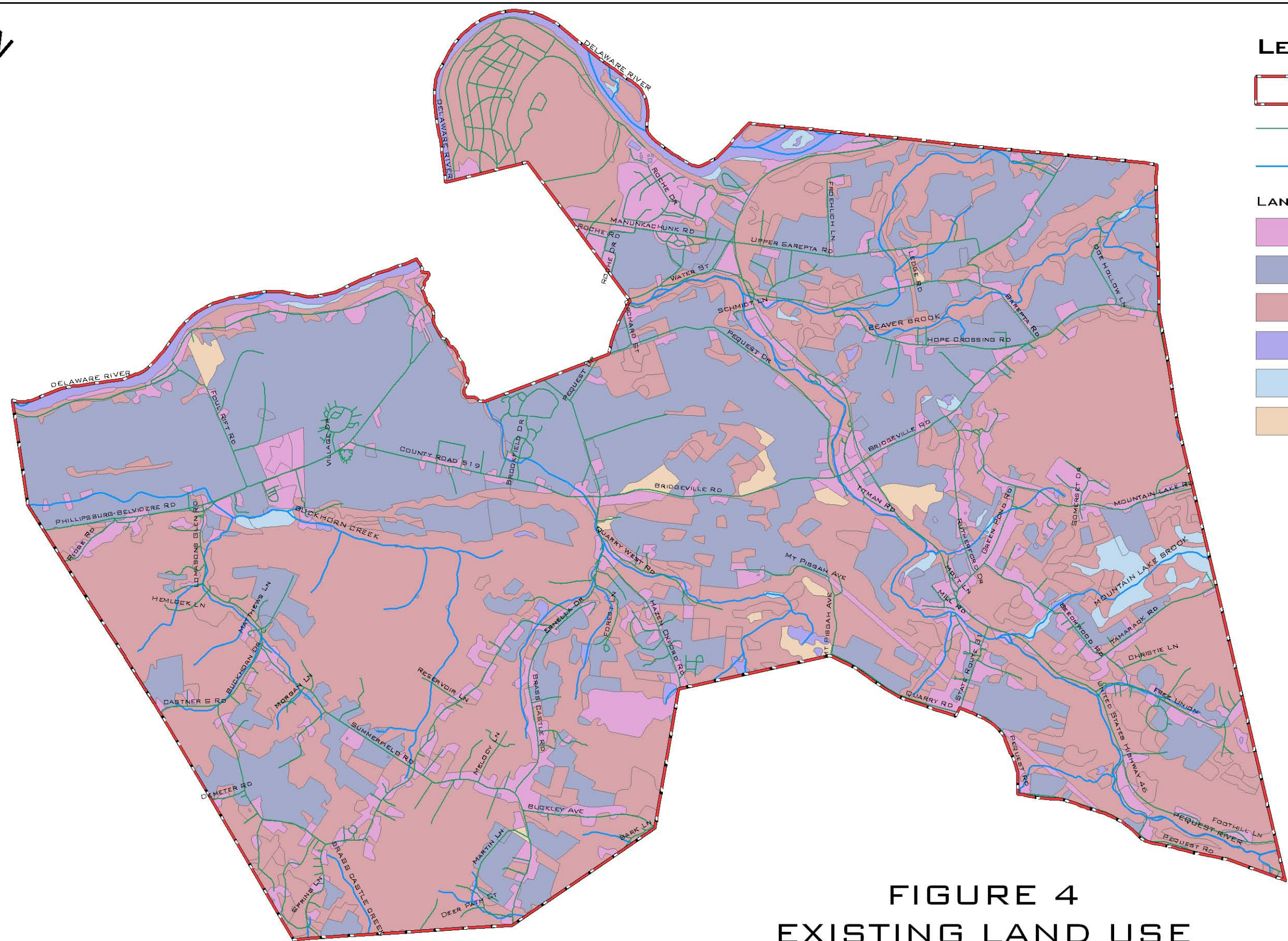


### LEGEND

-  MUNICIPAL BOUNDARY
-  ROADS
-  STREAMS
- LAND USE**
-  URBAN - 10.94% (3.04 SQ MI)
-  AGRICULTURE - 34.49% (9.59 SQ MI)
-  FOREST - 50.42% (14.02 SQ MI)
-  WATER - 2.10% (0.58 SQ MI)
-  WETLANDS - 1.13% (0.32 SQ MI)
-  BARREN - 0.91% (0.25 SQ MI)



## FIGURE 4 EXISTING LAND USE

WHITE TOWNSHIP  
WARREN COUNTY, NEW JERSEY

JANUARY 2005

THIS MAP WAS DEVELOPED USING NEW JERSEY DEPARTMENT OF ENVIRONMENTAL PROTECTION GEOGRAPHIC INFORMATION SYSTEM DIGITAL DATA. BUT THIS SECONDARY PRODUCT HAS NOT BEEN VERIFIED BY NJDEP AND IS NOT STATE-AUTHORIZED.

